

CHALET WALLPAPER

GWP 3701.853

COLOR

Shell/Gold

CONTENTS

100% Cotton

REPEAT HEIGHT

4.5"

REPEAT WIDTH

4.5"

PANEL WIDTH

27"

DIRECTION

Up the bolt

NOTES

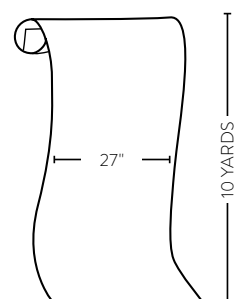
Price by the 5 yard single roll.

Packaged and sold by the 10 yard double roll.

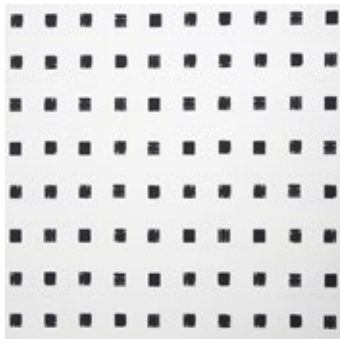
One roll will cover 33.75 square feet or 3.14 square meters.

This image is for illustrative purposes only. The colors shown are accurate within the constraints of lighting, photography and the color accuracy of your monitor.

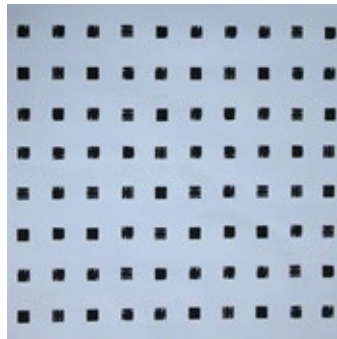
PACKING DIAGRAM



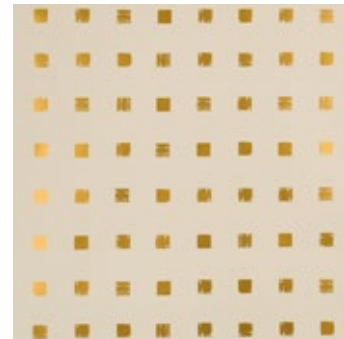
ADDITIONAL COLORWAYS



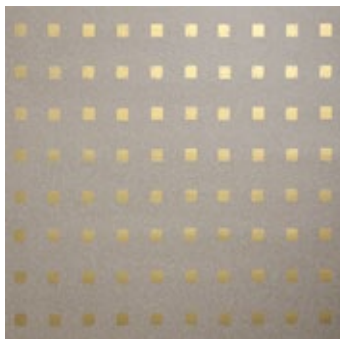
CHALET IVORY/BLACK
GWP 3502.168



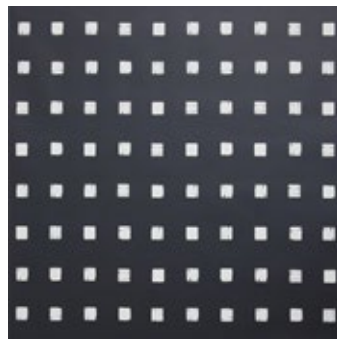
CHALET BLUE/BLACK
GWP 3502.150



CHALET IVORY/GOLD
GWP 3502.48



CHALET KRAFT/GOLD
GWP 3502.68



CHALET BLACK/IVORY
GWP 3502.18



HANGING INSTRUCTIONS & CARE

IMPORTANT

THIS IS A HANDPRINT. VARIATIONS IN PRINTS AND COLOR WILL OCCUR. TRIM LINES ARE FOR GUIDANCE. TRIM TO MATCH DESIGN.

Our wallcovering is manufactured by an exclusive process creating this unique look. Minor irregularities are to be expected as in any hand-crafted product. Labor claims are limited and can not be allowed if the following process is not followed:

1. Inspect wallcovering and fabric for correct pattern, dye lot, and run number (if specified) and obvious flaws. If unacceptable, **DO NOT CUT OR HANG**. If coordinating wallpaper or fabric are being used, be sure both are on hand and acceptable before beginning the installation. We can not accept any liability for faulty rolls after they have been cut.
2. Replacement is limited to one bolt for irregularities that could not be detected before installation.
3. The following instructions must be followed and all care must be exercised by the installer while handling the material
4. We suggest hanging 2 strips and then inspecting for any problems.

PREPARATIONS AND HANGING

This product is designed to be installed by a competent, professional paperhanger. We do not recommend installing over existing wallcoverings. **This paper may allow some show through—all surfaces must be smooth and sound, free of dust and peeling of inferior paint. Inferior latex paints must be cured with a product such as Gardz.** New plaster must be properly cured (60-90 days) and feel cool to the touch.

OLD WALLS Remove existing wallcoverings, sand. Wash and clean thoroughly to disinfect, remove adhesive and eliminate mold and bacteria. Patch and sand as necessary to achieve a smooth surface. Prime with a universal wallcovering primer (T9000, Sheildz, 1-23 etc.). **Do not use oil-based primers.**

NEW WALLS Smooth, free of dust, room temperature (55 degrees F or warmer for at least 12 hours prior to installation) and properly primed as instructed above.

Use of a pulp or acid free liner is necessary. **Use an absorbant liner paper** as one of the purposes is to absorb excess moisture and mitigate bubbles. Bubbles may be smoothed out with your smoothing tool. Writing on the wall to aid in installation should be done with light pencil or similar color pencil to ground of wallcovering. Never use ball point pen or marker as they may show through.

TRIMMING

Use a sharp new blade, brass bound straightedge and zinc strip. Trim just into color. When trimming striped prints be sure the trimmed product has equal width stripes. Trimming along the edge of a dark colored stripe will aid in producing invisible seams.



ADHESIVE AND APPLICATION

The use of a clear premixed adhesive works best with this product. **Do not use clay-based adhesive!** Wheat and cellulose adhesives are not recommended. A light weight clear paste is best.

Use either a pasting machine or roller, apply an even coat of adhesive over the entire back of each strip of the wallcovering. Be sure edges are evenly and adequately covered. Book the pasted sheet and allow adequate soak time (about 5 minutes) before installing. Soak time is essential to allow the pasted sheet time to relax and expand in order to prevent bubbles, wrinkles, and possible shrinkage after drying. Use caution if rolling seams.

Do not allow paste to get on the face of the wallcovering. If any should get on the face, remove at once with a damp, not wet sponge using a flicking action rather than scrubbing. Blot with a Turkish towel or soft cloth. Do not wipe. Do not allow paste to dry on face of wallcovering as permanent damage may occur. There may be some rub-off for dark colors.

STOP if you have staining or other issues. Call us with the following information:

1. Primer used 2. Liner paper used 2. Paste used 4. Wall conditions 5. Photos, cutting will help