



ENTANGLE WALLPAPER

GWP 3716.625

COLOR

Saddle

CONTENTS

90% Jute, 10% Cotton

REPEAT HEIGHT

24.41"

REPEAT WIDTH

34.25"

PANEL WIDTH

34.25"

DIRECTION

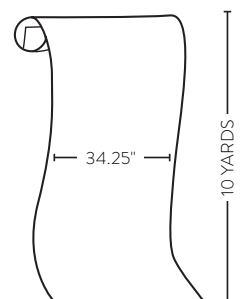
Up the bolt

NOTES

Price by the 5 yard single roll.
Packaged and sold by the
10 yard double roll.

This image is for illustrative purposes only. The colors shown are accurate within the constraints of lighting, photography and the color accuracy of your monitor.

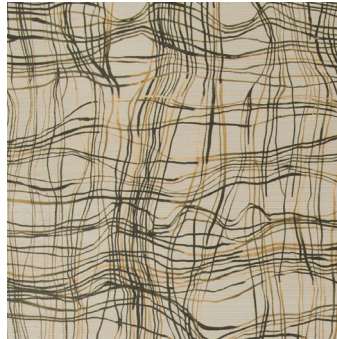
PACKING DIAGRAM



ADDITIONAL COLORWAYS



ENTANGLE ALMOND
GWP 3716.161



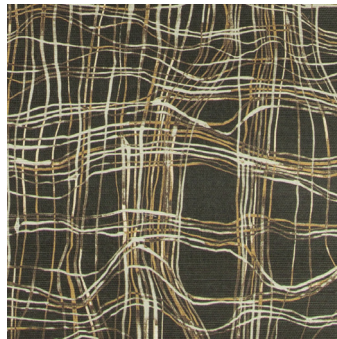
ENTANGLE CHARRED
GWP 3716.168



ENTANGLE MIST
GWP 3716.155



ENTANGLE MUSTARD
GWP 3716.406



ENTANGLE RAVEN
GWP 3716.816



HANGING INSTRUCTIONS

SURFACE PREPARATION

Walls should be smooth, dust-free and dry before applying the paste, to avoid creasing. If the surface is not perfect we recommend the use of a lining paper. **CHECK THE WALLPAPER** before cutting the rolls ensure that they are all from the same batch and that they are in good condition with no color variation or other defects. For each claim please indicate the batch number. After hanging 3 drops check the result. No claim is accepted for more than 3 drops.

APPLICATION

This product is hung by applying an even coating of paste either on to the wall. Avoid squeezing the paste between the edges of the paper.

THE PASTE MUST NOT COME INTO CONTACT WITH THE SURFACE OF THE PAPER AT ANY TIME. ALL TRACES OF PASTE MUST BE REMOVED BEFORE LIGHTLY DABBING THE SURFACE WITH A MOIST, CLEAN SPONGE. If paste is allowed to dry on the surface of the paper it will cause discoloration. We do not accept any claim for damage resulting from paste being applied to the surface.

Use a ready-mixed wallpaper paste such as methylan viola in accordance with the manufacturer's instructions. Apply the first drop in a perfectly vertical way. A better way to adhere the edges would be to paste a strip of the wall in line with the joins of the paper. Hang the lengths, one next to the other, neatly joined together, without any overlapping, taking care to match the pattern repeat.

To eliminate bubbles, and to ensure a perfect contact with the wall surface, use a decorator's wallpaper smoother or a dry cloth. Trim using a sharp blade and a metal ruler. If using scissors, trace the line to cut with a pencil and a ruler.

ADDITIONAL NOTES

Base TNT

Non-woven base