



# CHANNELS WALLPAPER

GWP 3417.811

## COLOR

Coin

## CONTENTS

100% Paper

## REPEAT HEIGHT

41.25"

## REPEAT WIDTH

55"

## PANEL WIDTH

55"

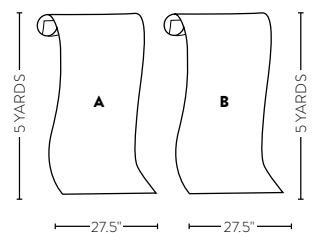
## DIRECTION

Up the bolt

## NOTES

Priced, packaged and sold by the set. Each set is an A and B roll. Each roll measures 27.5" wide by 5 yards long.

## PACKING DIAGRAM



This image is for illustrative purposes only. The colors shown are accurate within the constraints of lighting, photography and the color accuracy of your monitor.

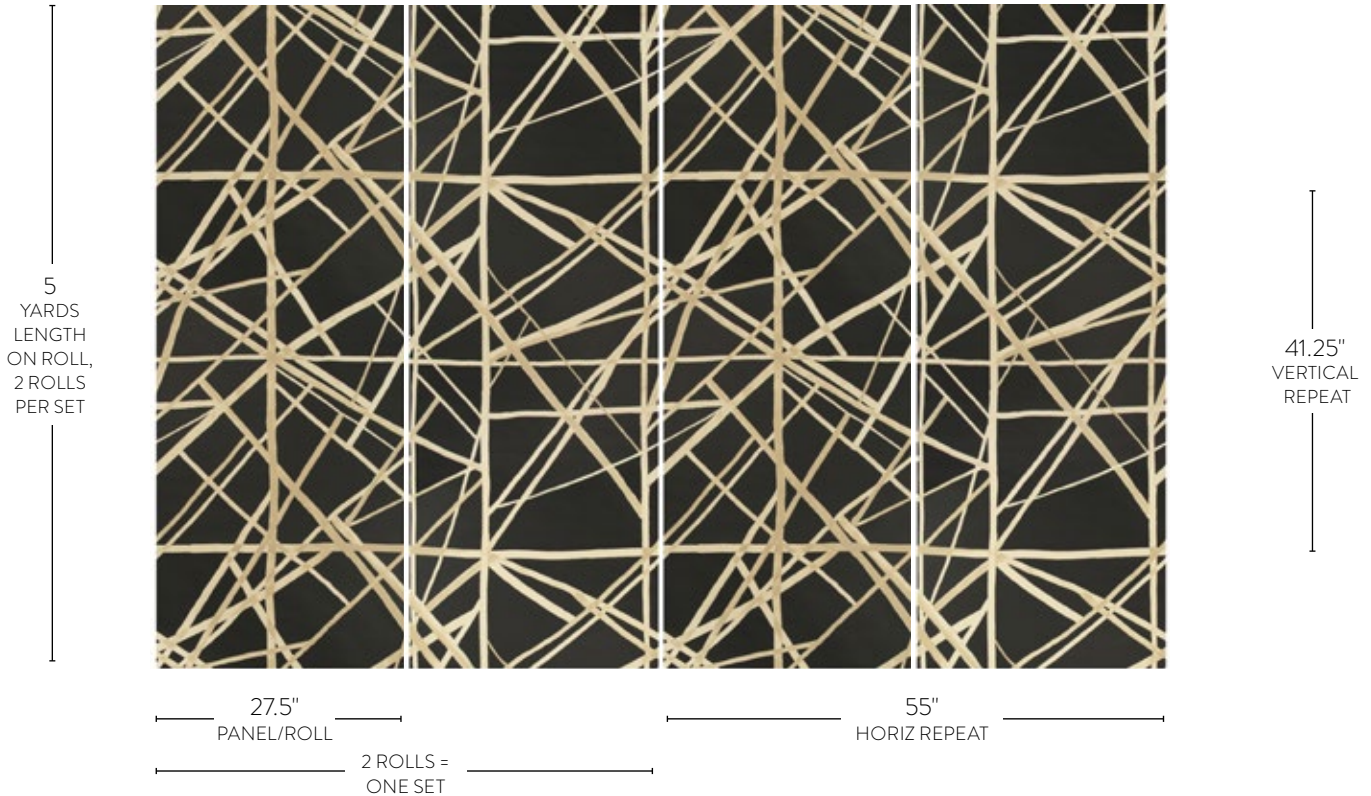


PANEL A

PANEL B

PANEL A

PANEL B



# CHANNELS WALLPAPER

GWP 3417.811

### CONTENTS

100% Paper

### REPEAT HEIGHT

41.25"

### REPEAT WIDTH

55"

### PANEL WIDTH

55"

### DIRECTION

Up the bolt

### NOTES

Priced, packaged and sold by the set. Each set is an A and B roll. Each roll measures 27.5" wide by 5 yards long.

This image is for illustrative purposes only. The colors shown are accurate within the constraints of lighting, photography and the color accuracy of your monitor.

### DIMENSIONS

Width of Panel: 27.5"

Length of Panel: 5 yards

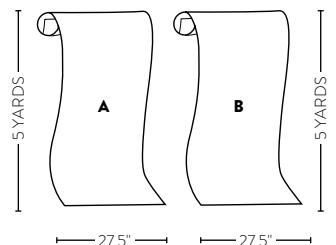
Vertical Repeat: 41.25"

Horiz Repeat: 55"

One set: 2 rolls

(5 yards of A, 5 yards of B)

### PACKING DIAGRAM



## ADDITIONAL COLORWAYS



**CHANNELS LAKE BEIGE**  
GWP 3417.316



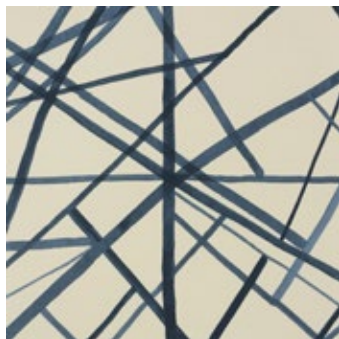
**CHANNELS EBONY IVORY**  
GWP 3417.816



**CHANNELS COPPER BEIGE**  
GWP 3417.424



**CHANNELS PLUM OAT**  
GWP 3417.911



**CHANNELS PERIWINKLE OAT**  
GWP 3417.516



**CHANNELS MOCHA CHAI**  
GWP 3417.617



**CHANNELS SLATE BLUE**  
GWP 3417.155



**CHANNELS LATTE SUEDE**  
GWP 3417.116



# HANGING INSTRUCTIONS & CARE

## IMPORTANT

**THIS IS A HANDPRINT. VARIATIONS IN PRINTS AND COLOR WILL OCCUR. TRIM LINES ARE FOR GUIDANCE. TRIM TO MATCH DESIGN.**

Our wallcovering is manufactured by an exclusive process creating this unique look. Minor irregularities are to be expected as in any hand-crafted product. Labor claims are limited and can not be allowed if the following process is not followed:

1. Inspect wallcovering and fabric for correct pattern, dye lot, and run number (if specified) and obvious flaws. If unacceptable, **DO NOT CUT OR HANG**. If coordinating wallpaper or fabric are being used, be sure both are on hand and acceptable before beginning the installation. We can not accept any liability for faulty rolls after they have been cut.
2. Replacement is limited to one bolt for irregularities that could not be detected before installation.
3. The following instructions must be followed and all care must be exercised by the installer while handling the material.
4. We suggest hanging two strips and then inspecting for any problems.

## PREPARATIONS AND HANGING

This product is designed to be installed by a competent, professional paperhanger. We do not recommend installing over existing wallcoverings. **This paper may allow some show through—all surfaces must be smooth and sound, free of dust and peeling of inferior paint. Inferior latex paints must be cured with a product such as Gardz.** New plaster must be properly cured (60-90 days) and feel cool to the touch.

**OLD WALLS** Remove existing wallcoverings, sand. Wash and clean thoroughly to disinfect, remove adhesive and eliminate mold and bacteria. Patch and sand as necessary to achieve a smooth surface. Prime with a universal wallcovering primer (T9000, Sheildz, 1-23 etc.). **Do not use oil-based primers.**

**NEW WALLS** Smooth, free of dust, room temperature (55 degrees F or warmer for at least 12 hours prior to installation) and properly primed as instructed above.

Use of a pulp or acid free liner is necessary. **Use an absorbant liner paper** as one of the purposes is to absorb excess moisture and mitigate bubbles. Bubbles may be smoothed out with your smoothing tool. Writing on the wall to aid in installation should be done with light pencil or similar color pencil to ground of wallcovering. Never use ball point pen or marker as they may show through.

## TRIMMING

Use a sharp new blade, brass bound straightedge and zinc strip. Trim just into color. When trimming striped prints be sure the trimmed product has equal width stripes. Trimming along the edge of a dark colored stripe will aid in producing invisible seams.



## ADHESIVE & APPLICATION

The use of a clear premixed adhesive works best with this product. **DO NOT USE CLAY-BASED ADHESIVE.** Wheat and cellulose adhesives are not recommended. A light weight deer paste is best.

Use either a pasting machine or roller, apply an even coat of adhesive over the entire back of each strip of the wallcovering. Be sure edges are evenly and adequately covered. Book the pasted sheet and allow adequate soak time (about 5 minutes) before installing. Soak time is essential to allow the pasted sheet time to relax and expand in order to prevent bubbles, wrinkles, and possible shrinkage after drying. **Use caution if rolling seams.**

**DO NOT ALLOW PASTE TO GET ON THE FACE OF THE WALLCOVERING.** If any should get on the face, remove at once with a damp, not wet sponge using a flicking action rather than scrubbing. Blot with a Turkish towel or soft cloth. Do not wipe. Do not allow paste to dry on face of wallcovering as permanent damage may occur. **There may be some rub-off for dark colors.**

## TROUBLESHOOTING

- **Issues with the design matching** – Check unpasted rolls to see if they match before hanging and/or pasting. Is the wallcovering trimmed correctly? Are the ceilings and walls straight?
- **Edges lifting** – Ensure paste goes to the edge and your fingers have not taken paste off the ends. You may use your smoothing tools to smooth down the seams.
- **Bubbles** – Did you use good absorbant liner paper? Correct paste? No extra moisture? Remember moisture is problematic and can cause bubbles and wrinkles. Allow booking to expand all areas of the paper evenly (printed & unprinted areas may expand at different rates—especially with heavier metallic inks in concentrated areas) You may smooth the bubbles out with your smoothing tools. Booking time 5-10 mins. Try misting the back of the sheets with a spray bottle containing warm water, letting it relax for a minute of two and then pasting if excessive bubbling takes place.
- **Staining** – STOP if you have staining or other issues. Call us with the following information: Primer used, liner paper used, paste used and booking time, wall conditions, photos (describe the problem that is shown in the photo precisely and with arrows), a roll of the unhung wallpaper, dyelot number and pattern number are needed.

## ADDENDUM FOR FOIL ONLY

**PLEASE READ. Foil substrate is a very delicate material. Experience WITH FOIL is always a benefit. Creases, wrinkles or scratches in the foil cannot be removed.** Foil when installed according to directions with care will create a beautiful, elegant look.

As per the other page of the hanging instructions, if you find issues after hanging 1-2 strips STOP AGAIN. As noted, refund is limited to only the first couple of strips of the product only. No claims for hanging can be made at all and product refunds/replacements/credit will also be limited as such. Further, replacement may become an issue if no more rolls are available of the same dyelot, which cannot be guaranteed.

The product has been hand printed on this substrate. The substrate is purchased as is by the hand printer. The manufacturer of the foil produces the products in large quantities and your order is a part of that batch. The



hand printer also prints on a fair amount of this substrate. It is likely that others have hung the same substrate and/or this product. Hand printing has variations that affect mostly the design and are covered in the other page. Here we address care that is needed regarding the substrate:

The walls **MUST** be lined with an absorbent lining paper installed on a scrupulously prepared wall. That means that the wall is as smooth as glass and has been sealed with an acrylic wallcovering primer. Use only a clear premixed adhesive. When the lining paper has completely dried, use a dry-hanging technique to install this wallcovering. Remember: “moisture is our enemy and can cause bubbles and wrinkles!”

Use pencil only to make engineering marks on the lining paper. Press lightly so as not to make any indented marks in the liner. Inspect the liner to make sure that no seams are overlapped or wired. If they are, sand such areas smooth. Liner seams must be perfectly butted and are not open or it will show through the foil. Be sure that no protrusions, cracks, or the like are showing through the lining paper. If any are, they must be eliminated before proceeding.

Using a very short nap or microfibre roller apply clear premixed adhesive to the liner slightly wider than the width of two strips of the patterned foil. While the paste is becoming tacky, cut two strips of the foil to the height of the wall allowing for match and trim. Roll each length pattern side in from the bottom to the top. A roll of wallcovering placed at the bottom of the cut sheet may aid in the process and help to prevent creases. Clamp, clip, or keep the wallcovering rolled up using elastic bands.

When the pasted liner is sufficiently tacky, position the first 16” or half meter of the wallcovering to the horizontal level and vertical plumb lines and smooth using a dry mohair or microfiber roller. Roll down the center lightly and then toward the edges using care not to roll off the wallcovering and into the paste. Use fingers protected by cotton gloves to smooth the seams. Continue to install the sheet in this fashion. Lightly crease the top and bottom edges with a broad knife or vinyl smoother and trip. Install second sheet to match. Repeat as above.

**NOTE: THIS IS A PAPER BACKED FOIL WALLCOVERING WHICH CONDUCTS ELECTRICITY. Extreme care must be taken when installing around electrical fixtures, switches, and receptacles.**