



kelly wearstler



BRINK WALLPAPER

GWP 3703.511

COLOR

Artic/Cloud

CONTENTS

Front: 100% Cellulose

Back: 100% Cotton

REPEAT HEIGHT

32.5"

REPEAT WIDTH

27"

PANEL WIDTH

27"

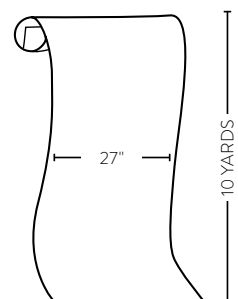
DIRECTION

Up the bolt

NOTES

Priced by the yard, sold by the 10 yard roll.

PACKING DIAGRAM



This image is for illustrative purposes only. The colors shown are accurate within the constraints of lighting, photography and the color accuracy of your monitor.



ADDITIONAL COLORWAYS



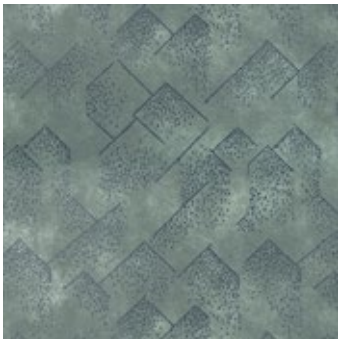
BRINK BLUSH/GOLD
GWP 3703.174



BRINK CREAM/ONYX
GWP 3703.18



BRINK GOLD/ONYX
GWP 3703.840



BRINK NAVY/SLATE
GWP 3703.115



HANGING INSTRUCTIONS & CARE

THESE WALLCOVERINGS ARE ALL HANDCRAFTED AND VARIATIONS SHOULD BE EXPECTED THROUGHOUT THE ROLL. ALTHOUGH EXTREME CARE IS TAKEN DURING MANUFACTURING, VARIATIONS IN SHADE AND TEXTURE ARE TO BE EXPECTED. FINAL INSPECTIONS ARE THE RESPONSIBILITY OF THE USER. WE WILL NOT ACCEPT ANY CLAIMS FOR CUT MERCHANDISE OR LABOR. THE INSTALLER SHOULD STEP BACK AND EXAMINE THE WALLCOVERING AFTER EVERY FEW STRIPS TO ENSURE THE DESIRED EFFECT IS ACHIEVED.

CHECK BEFORE CUTTING

Before cutting and hanging, check pattern name and number to match product(s) ordered. NO CREDIT for labor charges will be allowed for cutting or hanging wrong colorways or patterns. Be sure that there is sufficient material to complete the job. Should you have any questions, contact Kravet Customer Service before proceeding. NO RETURNS will be accepted after the material is cut.

WALL PREPARATION

Previous wallcovering must be removed. Walls must be structurally sound, dry, sealed and clean prior to installation. Wall surfaces should be free from defects and imperfections that could show through the finished covered surface. Walls should be smooth and clean and prepared with a latex primer or wall prep. Walls should be washed with detergent or bleach to kill any bacteria that could cause mildew. New construction may have lime which should be neutralized with a coating of zinc sulfate (one pound to one gallon of water) and allowed to dry completely.

TRIMMING

Handcrafted wallcoverings are usually cut into strips and dry trimmed. Do not double cut. Take care to trim accurately. Heavy texture might show through as white when trimmed. Be sure edges are even before installation. Each shipment contains bolts marked with consecutive numbers. This is the order in which the wallcovering was produced, hence, this is the order in which the bolts **must** be hung. Example: from bolt 1, hang the first strip, then hang the second strip from bolt 1, then the third strip from bolt 1, etc. Continue with this same procedure for the remaining bolts.

ADHESIVE

You **MUST** use a quality grade heavy-duty premixed clear vinyl non-staining adhesive with a low water content. **Do not dilute. Using another type of adhesive will be solely at the risk of the installer.** Prepare walls using strippable adhesive if wallcovering is to be removed at a later date. Apply an even coat of adhesive to the back of the wall covering using a soft nap roller. Allow the adhesive to become tacky. **(Please be advised that different sub-straights may need slightly more or slightly less booking time to achieve the proper tack.)** Additionally, if required, pre-paste the wall, allow wall to tack and then apply strip. Completely clean adhesive off the surface



after each strip is hung. Any adhesive left on the surface can cause flaking. When removing paste from the surface, try to avoid excessive rubbing or pressure. Use a mild soap or detergent to clean the wallcovering.

INSTALLATION

Wallcovering should be installed by experienced workers and contractors in strict accordance with these instructions. Material must be dry table trimmed. **DO NOT DOUBLE CUT.** Apply material to wall using a soft brush, plastic smoother, or drywall blade wrapped with a soft cloth to layout the material. When smoothing, work from the center out to the edges. To avoid trapping air bubbles, use an oval seam roller to butt seams. Wash smoothing brush and seam roller often, as an accumulation of paste on tools may mark or scratch the material. Completely clean adhesive off the surface after each strip is hung. Wash seams with a damp sponge and clean warm water. Change rinse water often. Any adhesive left on the surface can cause flaking. Dry carefully with a soft cloth or chamois.

MAINTENANCE

Stains should be removed immediately -wipe-off with a clean sponge or rag (slightly damp). Use a mild detergent to clean the wallcovering. Do not soak. Avoid excess rubbing or pressure so as to not damage the finish.