



CASCADIA WALLPAPER

GWP 3715.168

COLOR

Pearl

CONTENTS

90% Jute, 10% Cotton

REPEAT HEIGHT

90.55"

REPEAT WIDTH

68.5"

PANEL WIDTH

34.25"

DIRECTION

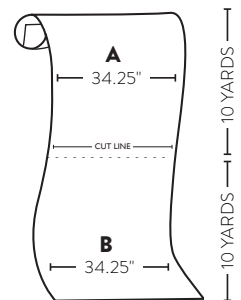
Up the bolt

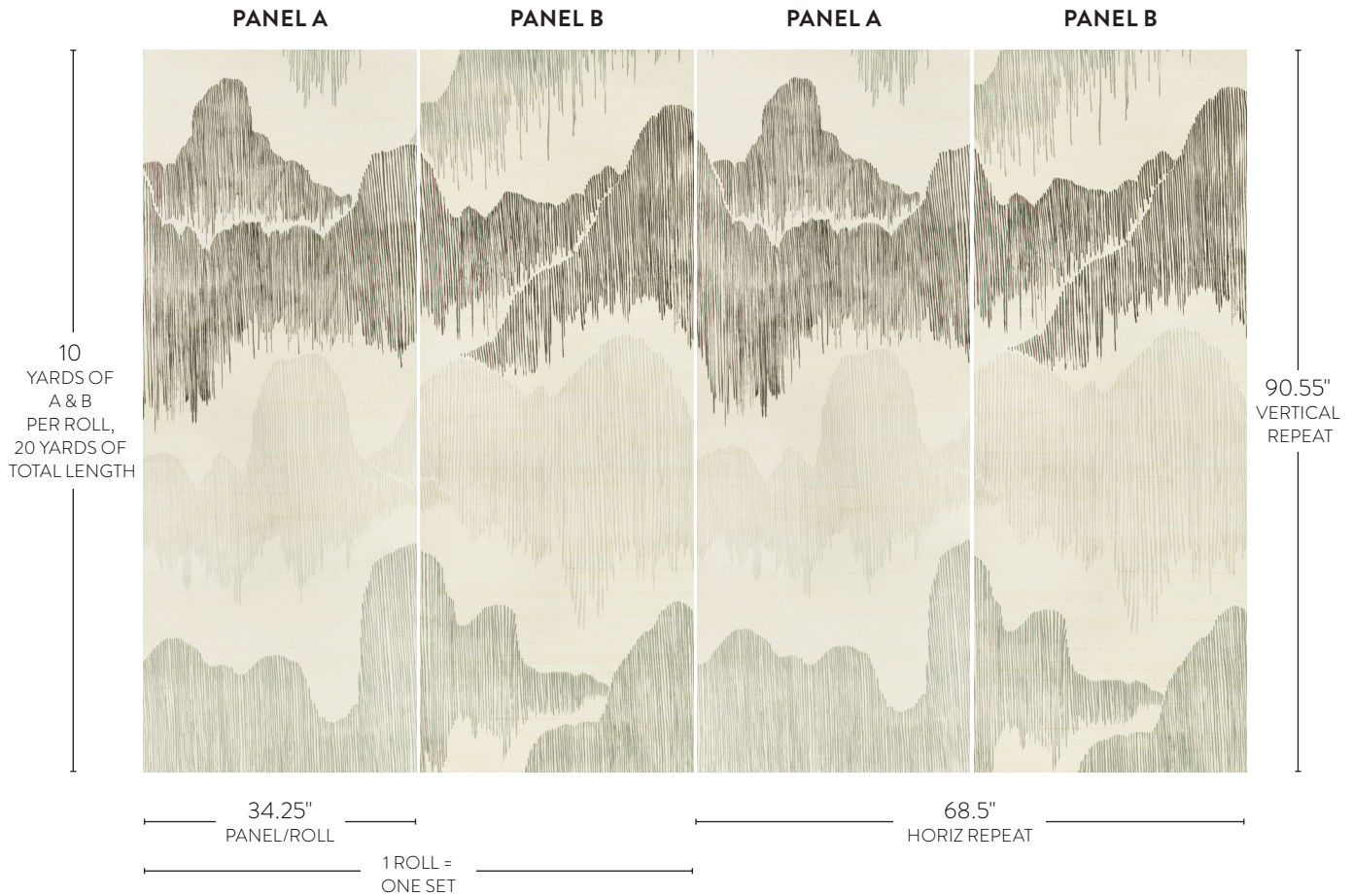
NOTES

Price, package and sold by the set. Each set is rolled together as one continuous roll. A cut line separates side A and B of the design. Each side measures 34.25" wide by 10 yards long.

This image is for illustrative purposes only. The colors shown are accurate within the constraints of lighting, photography and the color accuracy of your monitor.

PACKING DIAGRAM





CASCADIA WALLPAPER

GWP 3715.168

WALLPAPER PREPARATION

All walls should be clean and smooth. Plaster walls and ceiling should be primed with an oil base primer and should be sized. Latex, semigloss or enamel walls should be sanded and primed with an oil base primer. Plasterboard walls should be sealed and sized. We recommend the use of lining paper on all walls. We do not recommend the use of pre-sized adhesives for hanging Kelly Wearstler wallcovering.

WALLPAPER ADHESIVE

All papers should be hung with good quality wheat paste of a non-staining cellulose paste. Adhesive left on the surface of the paper may cause flaking. Variations in dye lots can cause slight shifts in color from order to order.

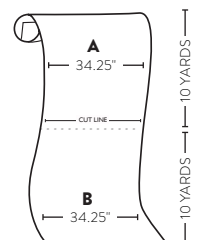
For custom inquiries and pricing, please contact the Kelly Wearstler Flagship Boutique 323.895.7880

DISCLAIMER These instructions are meant to assist in the process of installation. Please consult a professional wallpaper installer with queries or quantity required for a successful installation. Kelly Wearstler Lifestyle LLLP does not take responsibility for final execution. Wallcoverings cannot be returned.

DIMENSIONS

- Width of Panel: 34.25"
- Length of Panel: 10 yards
- Vertical Repeat: 90.55"
- Horiz Repeat: 68.5"
- One set: 1 roll (10 yards of A, 10 yards of B)

PACKING DIAGRAM



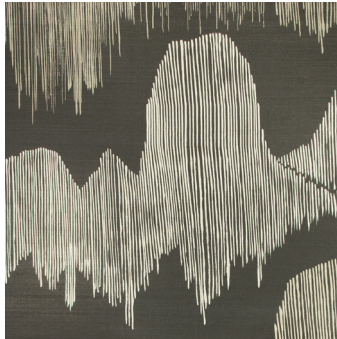


kelly wearstler

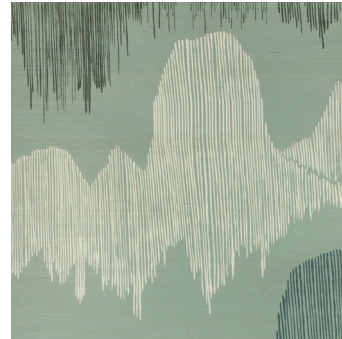
ADDITIONAL COLORWAYS



CASCADIA BLUSH
GWP 3715.171



CASCADIA NOIR
GWP 3715.811



CASCADIA TEAL
GWP 3715.113

This image is for illustrative purposes only. The colors shown are accurate within the constraints of lighting, photography and the color accuracy of your monitor.



HANGING INSTRUCTIONS

SURFACE PREPARATION

Walls should be smooth, dust-free and dry before applying the paste, to avoid creasing. If the surface is not perfect we recommend the use of a lining paper. **CHECK THE WALLPAPER** before cutting the rolls ensure that they are all from the same batch and that they are in good condition with no color variation or other defects. For each claim please indicate the batch number. After hanging 3 drops check the result. No claim is accepted for more than 3 drops.

APPLICATION

This product is hung by applying an even coating of paste either on to the wall. Avoid squeezing the paste between the edges of the paper.

THE PASTE MUST NOT COME INTO CONTACT WITH THE SURFACE OF THE PAPER AT ANY TIME. ALL TRACES OF PASTE MUST BE REMOVED BEFORE LIGHTLY DABBING THE SURFACE WITH A MOIST, CLEAN SPONGE. If paste is allowed to dry on the surface of the paper it will cause discoloration. We do not accept any claim for damage resulting from paste being applied to the surface.

Use a ready-mixed wallpaper paste such as methylan viola in accordance with the manufacturer's instructions. Apply the first drop in a perfectly vertical way. A better way to adhere the edges would be to paste a strip of the wall in line with the joins of the paper. Hang the lengths, one next to the other, neatly joined together, without any overlapping, taking care to match the pattern repeat.

To eliminate bubbles, and to ensure a perfect contact with the wall surface, use a decorator's wallpaper smoother or a dry cloth. Trim using a sharp blade and a metal ruler. If using scissors, trace the line to cut with a pencil and a ruler.

ADDITIONAL NOTES

Base TNT

Non-woven base