

# GRIDLOCK FABRIC

**GWF 3756**

## COLORS

(161) Moccasin  
(168) Vanilla Bean  
(179) Cinnamon  
(316) Hunter  
(515) Admiral

## PATTERN TYPE

Embroidery

## CONTENT

84% Cotton, 16% Spun Polyester

## FABRIC WIDTH

50.8"

## FABRIC REPEAT

29.5" VERT x 25.4" HORZ

## USE

Multi-purpose

## CLEANING CODE

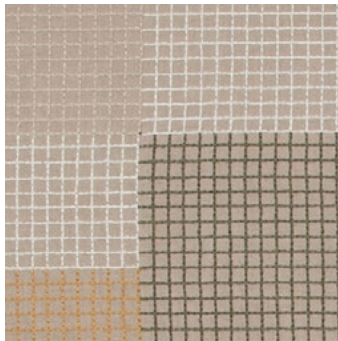
S (Solvent or Dry Cleaning Product)

## ORIGIN

Italy

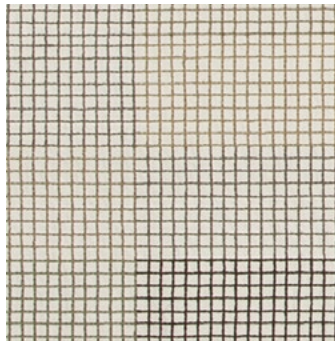
This image is for illustrative purposes only. The colors shown are accurate within the constraints of lighting, photography and the color accuracy of your monitor.

## GRIDLOCK COLORWAYS



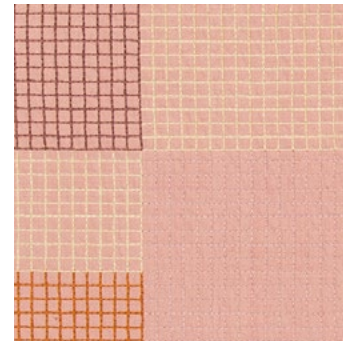
**GRIDLOCK FABRIC  
MOCCASIN**

GWF 3756-161



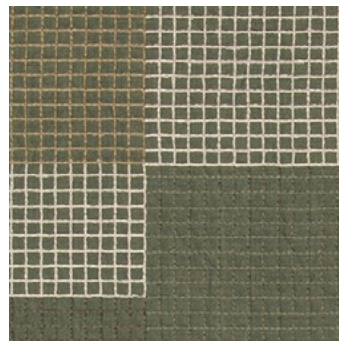
**GRIDLOCK FABRIC  
VANILLA BEAN**

GWF 3756-168



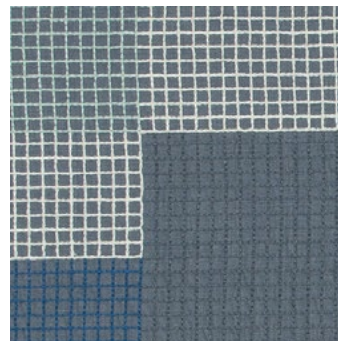
**GRIDLOCK FABRIC  
CINNAMON**

GWF 3756-179



**GRIDLOCK FABRIC  
HUNTER**

GWF 3756-316



**GRIDLOCK FABRIC  
ADMIRAL**

GWF 3756-515