

# MINERAL WALLPAPER

GWP 3719.135

## COLOR

Aquamarine

## CONTENTS

45% Wood Pulp, 20% Binder, 20% Mineral Fillers, 15% Polyester

## REPEAT HEIGHT

38.5"

## REPEAT WIDTH

27.5"

## PANEL WIDTH

27.5"

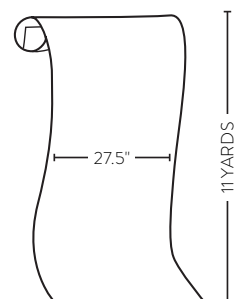
## DIRECTION

Up the bolt

## NOTES

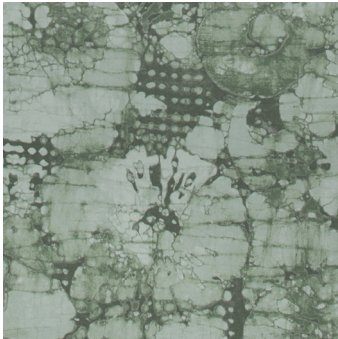
Price by the 5.5 yard single roll.  
Packaged and sold by the  
11 yard double roll.

## PACKING DIAGRAM



This image is for illustrative purposes only. The colors shown are accurate within the constraints of lighting, photography and the color accuracy of your monitor.

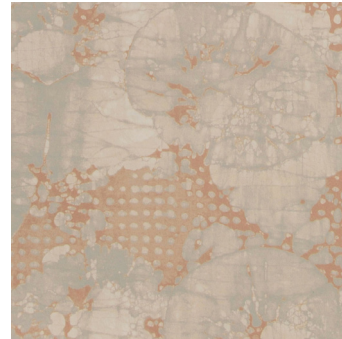
## ADDITIONAL COLORWAYS



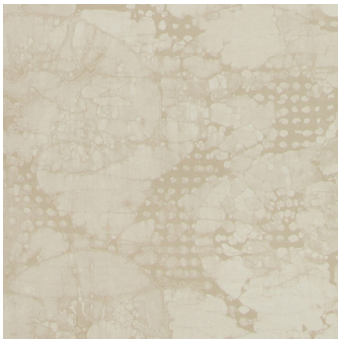
**MINERAL ALGAE**  
GWP 3719.305



**MINERAL BURNT UMBER**  
GWP 3719.164



**MINERAL ROGUE**  
GWP 3719.711



**MINERAL WHITEWASH**  
GWP 3719.116



# HANGING INSTRUCTIONS & CARE

## IMPORTANT

Before cutting and hanging wallpaper or borders, please inspect every roll to ensure that they all have the same batch number, are in good condition and that the edges match correctly. The company cannot accept any liability for defects in the condition of the product or matching which are apparent at the time of hanging, nor can the company be responsible for any consequential loss. All labels should be retained until hanging is complete and to your satisfaction. If the wallpaper is an all-over dark color, the ends of the roll should be colored with a matching water based crayon or marker to avoid white edges showing.

## PREPARATION

Walls should be clean, firm and dry. Roughen any painted surfaces with glass/sandpaper to form a key. Remove any old wallcoverings and fill in any holes and cracks. Size any absorbent surfaces. Scrape powdery or flaky areas and paint with a suitably prepared size, or oil-based primer, allowing it to dry completely.

## LINING

It is important that the walls are horizontally cross-lined, using a good quality lining paper. The adhesive used should be the same as that on the final wallpaper; we recommend that lining paper is then sized to aid adhesion. The lining should be allowed to dry out fully before hanging our wallcoverings.

## ADHESIVE

**This is a 'paste the wall' product. The decorator should paste the wall and NOT the back of the wallpaper.** Ensure that a good quality ready mixed light grade starch or wheat based adhesive containing fungicide is used with this wallcovering. The following are NOT suitable for hanging this product and may cause staining or damage to the surface of the paper: medium weight and heavy weight vinyl adhesives, powder paste and PVC based adhesive. The recommended adhesive is available from GP & J Baker in 5kg and 10kg containers. This is a light grade, maize starch based PVA (non-plasticised), ready mixed paste containing fungicide.

## APPLICATION

Cut your lengths allowing for pattern matching and for final trimming top and bottom. DO NOT assume that the wallpaper will come off the roll the right way up—this should always be checked and if unsure consult the pattern book, check with your retailer. This is a 'paste the wall' product. Paste should be evenly applied to the wall to hang one length at a time, to an area slightly wider than the width of the roll. Use a plumb line when hanging the first length and smooth the paper onto the wall, using a paperhanger's brush, from the centre of the length to the edge to expel air bubbles. Try to avoid getting adhesive on the printed surface, as dried paste will damage the surface of printed wallpaper. If it is unavoidable, gently wipe off with a clean damp sponge whilst it is moist, making sure to rinse the sponge thoroughly throughout the cleaning process using clear water only and no soap or cleaning liquids of any kind. After hanging 3 or 4 lengths, we strongly recommend that you inspect the result to ensure no shading or other faults are present. Ideally the wallpaper should be left overnight to dry before



inspection. NO claim for redecorating costs can be allowed once more than one roll has been hung. Special care should be taken when hanging very pale colors as joins are inevitably more apparent. Butt-join subsequent lengths. If sufficient paste has been applied there should be no need to use a seam roller or paper hanger's brush to smooth down edges. It is advised that completed whole areas are wiped down with a clean damp sponge to give a consistent lustre upon drying. Good ventilation and an even temperature will assist in the even drying of wallpaper.

## CARE

This wallpaper has a matte finish which permits the removal of surface marks by gently dabbing with a moist sponge. Do not scrub or use any abrasive cleaning agents.

## CONTRACT USE

This wallpaper complies with the requirements for a Class O surface as defined in paragraph A13(b) of approved document B, (2000 edition incorporating 2002 amendments) 'Fire Safety', to the Buildings Regulations 2000. Therefore, it is suitable for use in a contract situation.

**This information is supplied in good faith, but without guarantee and on the understanding that the installer will have decorating knowledge to work with differing site or atmospheric conditions.**